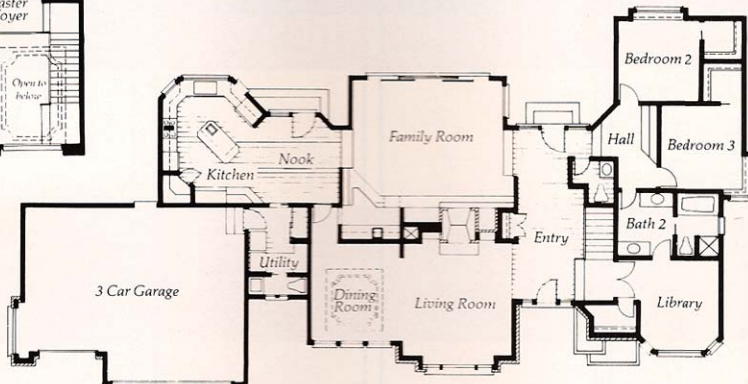
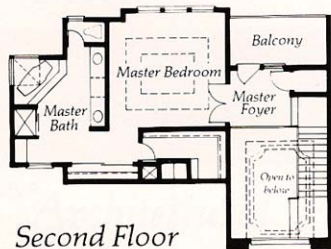
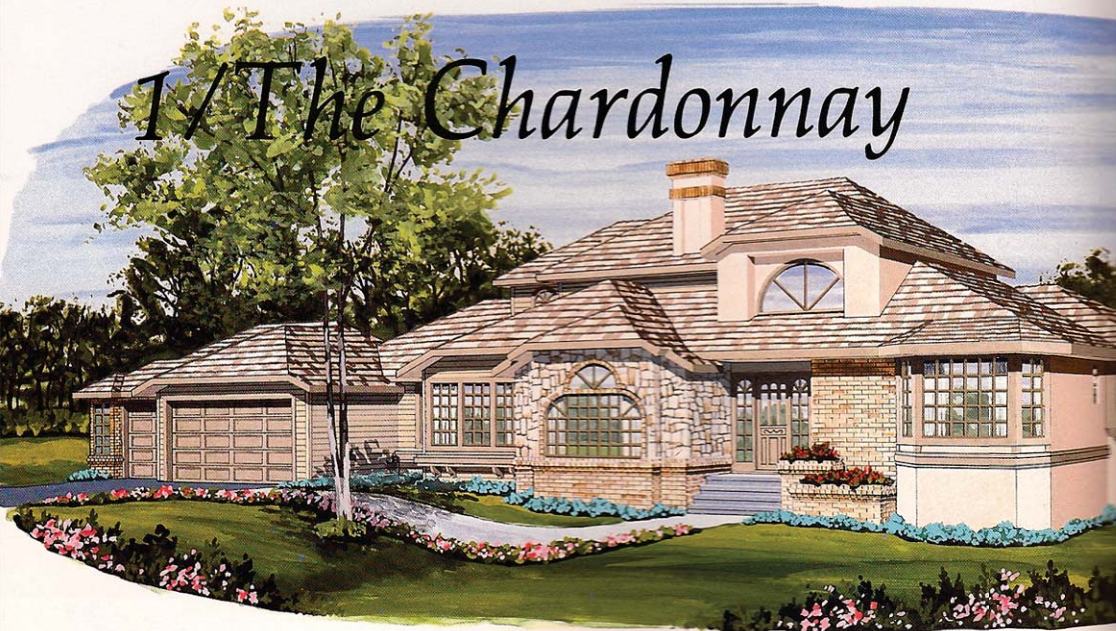


1/ The Chardonnay



GLM Custom Homes originated in 1977, marking 10 years in custom building and over 180 houses throughout Sacramento, Placer and El Dorado counties. In Rancho Murieta GLM has a 7 year record of designing and building distinctively custom homes. The company offers its own drafting service and builds primarily from its own plans.

The core of this Roseville company is a husband-wife team, Garen and Susan McCune. Garen graduated in forestry, but directly after college he joined a building company in Southern California. There he supervised off-site developments and eventually transferred to Sacramento as superintendent of the company's projects here. After 7 years McCune left to start GLM. Susan McCune also redirected her career, trading a teaching credential for a drafting degree. She now does the design work for GLM.

GLM Custom Homes, Inc.
(916) 791-4940